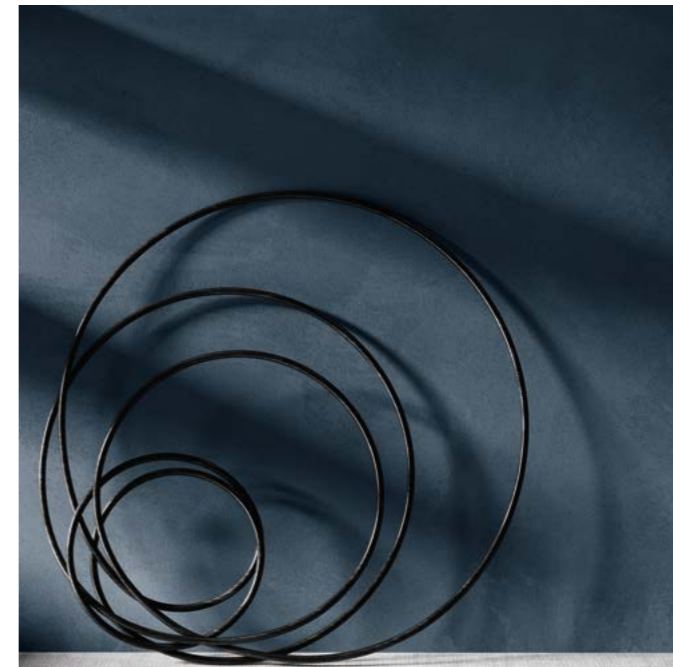


# SET



ceramica  
**SANT'AGOSTINO**

# SET



I linguaggi contemporanei, non solo del progetto ma della stessa vita quotidiana, sono sempre più fluidi, nei valori estetici, sociali, economici. E nulla è più eclettico della materia ceramica evoluta, che sembra giocare liberamente - in un'alchimia di sintesi fra derivazioni, incroci e composizioni - con le altre materie: studiandole, interpretandole e plasmandole per renderle più adatte ad ogni esigenza del costruire e dell'abitare contemporanei.

SET è una vera e propria fusione di materiali diversi - cemento: SET CONCRETE; cemento-tessuto: SET DRESS e SET TARTAN; cemento con marmo: SET GEM; vernice: SET WALL; legno: METROWOOD; decorazione: METROSIGNS - che si incrociano fino ad unirsi l'uno con l'altro per dare vita a piccoli capolavori ceramici.

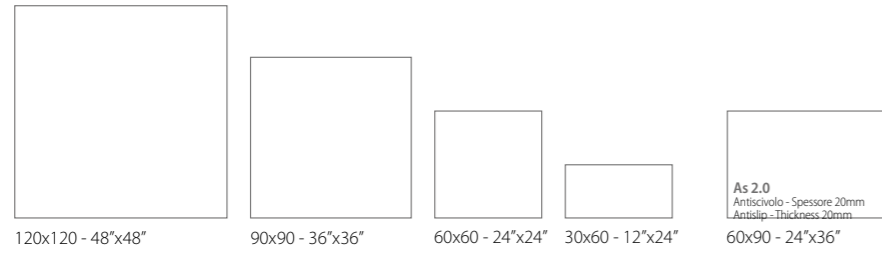
The contemporary languages, not only of the project but the same everyday life, are increasingly fluid, in the aesthetic values, social, economic. Nothing is more eclectic than the evolved ceramic matter, which seems to play free - in an alchemy of synthesis between derivations, intersections and compositions - with other materials: by studying, interpreting and shaping to make them more suitable for all the requirements of contemporary building and living.

SET is a true fusion of different materials - cement: SET CONCRETE; cement-fabric: SET DRESS and SET TARTAN; cement with marble: SET GEM; paint: SET WALL; wood: METROWOOD; decoration: METROSIGNS - that intersect to join up one to the other and give life to small ceramic masterpieces.

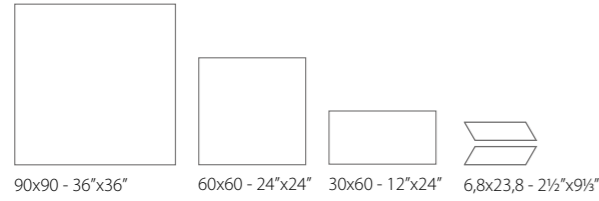


# FORMATI • SIZES

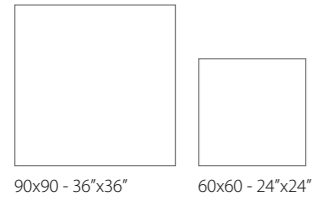
## SET CONCRETE



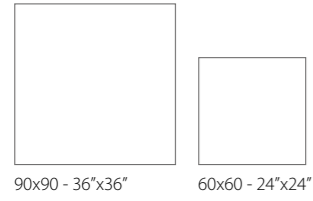
## SET DRESS



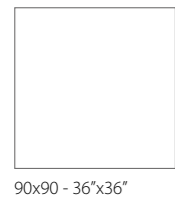
## SET GEM



## SET TARTAN

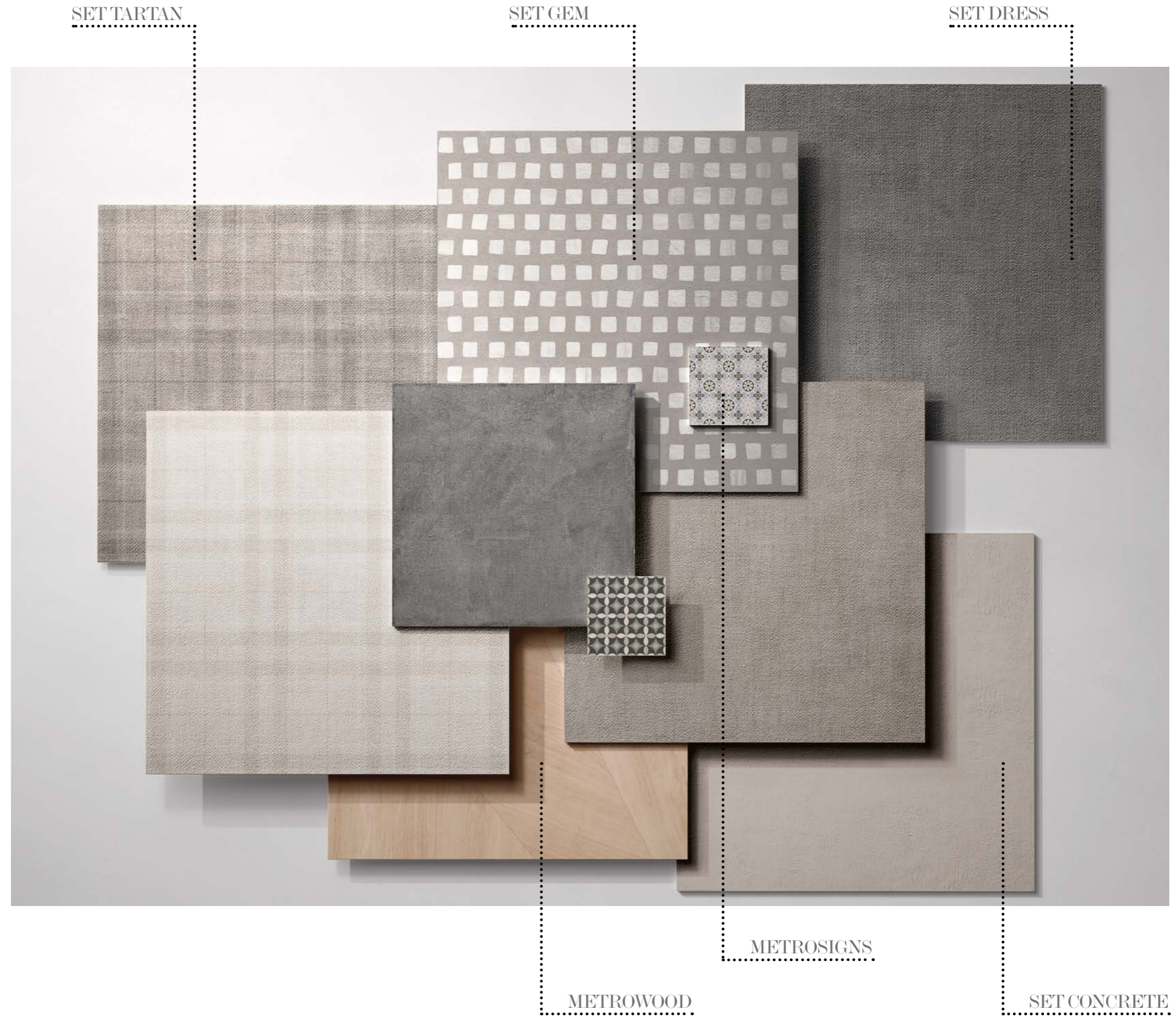


## METROWOOD



## Gres Porcellanato Rettificato

Porcelain Rectified  
 Feinsteinzeug Kalibriert  
 Grès cérame Rectifié  
 Керамогранит Ректифицированная





# LAVORAZIONE MANUALE DI CASSERI DI CEMENTO

6

Manual processing of  
concrete structures

Manuelle Verarbeitung  
von Zementverschalungen

Travail artisanal du béton  
brut de coffrage

Ручная обработка  
цементных опалубок

Set Concrete Dark 120120



7



# ARMATURA DI UN TAPPETO A RIGHE DI COTONE IMMERSO NEL CEMENTO

10

The weft of entwined stripes of a  
cotton carpet set in concrete

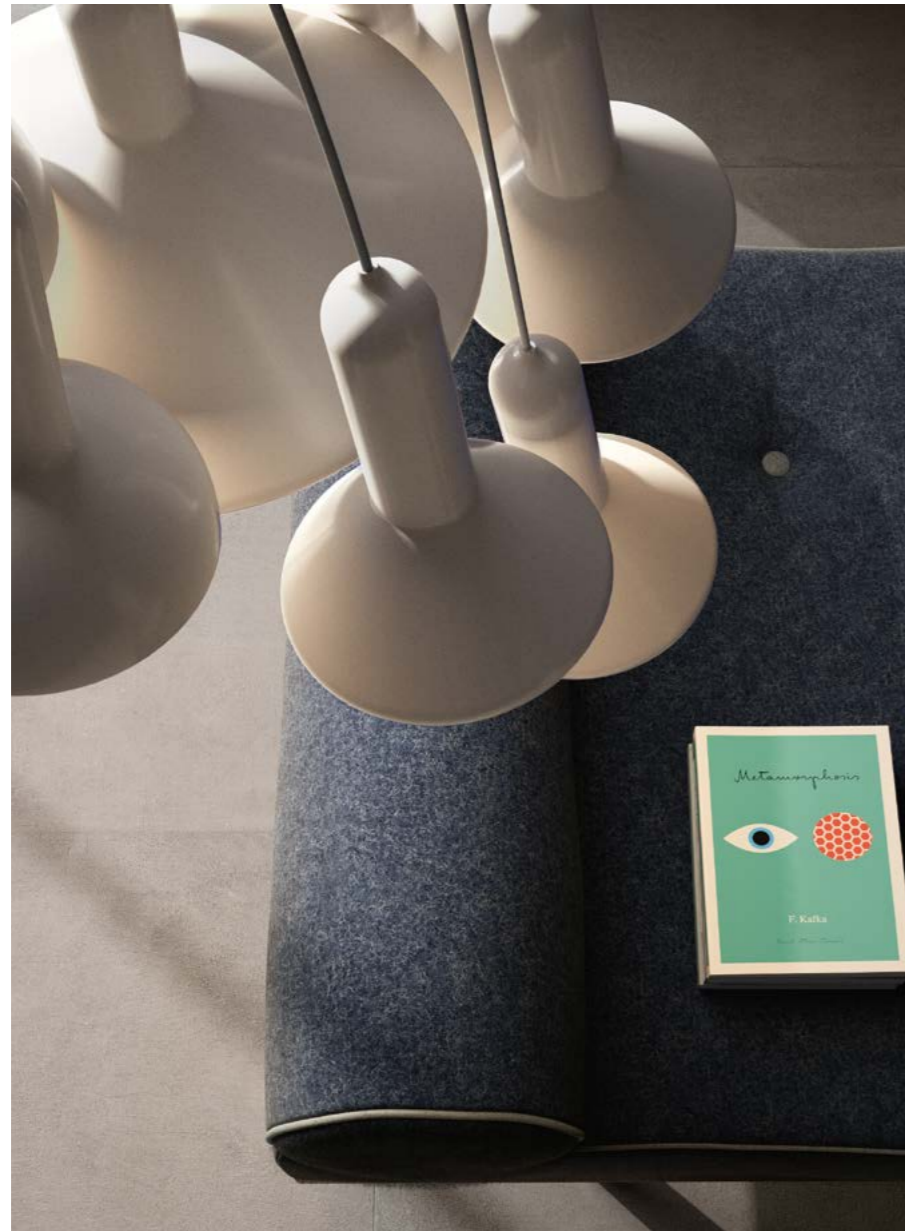
Bindung eines teppichs mit  
Baumwollstreifen in zement getauchtn

Armure d'un tapis a rayures de coton  
immerge' dans le beton

Армирование х/б подложкой в  
полоску, погружённой в цемент

Set Dress Dark 9090





Set Concrete Grey 9090  
Wall / Set Dress Grey 9090



# L'ARTE DI COMPORRE IL SOFISTICATO EQUILIBRIO DELLE MATERIE NELLO SPAZIO CONTEMPORANEO

14

The art of creating a sophisticated balance of materials in contemporary space

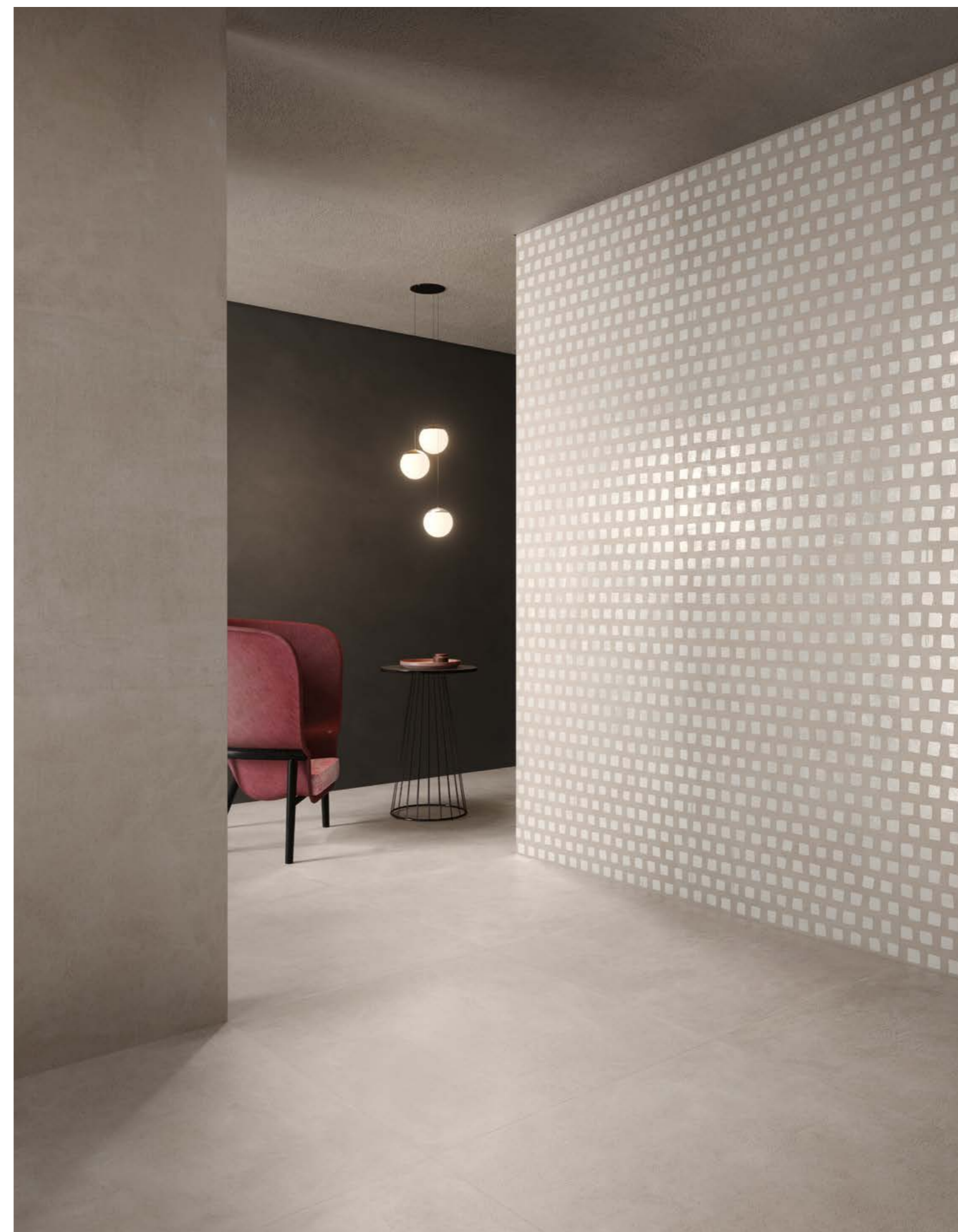
Die Kunst, ein ausgeklügeltes Gleichgewicht zwischen den Rohstoffen herzustellen in zeitgenössischer Umgebung

L'art de composer un sophistiqué équilibre des matières dans l'espace contemporain

Искусство создавать изысканную гармонию материалов в современном пространстве

Set Concrete Pearl 9090

Wall / Set Gem Pearl 9090, Set Concrete Pearl 9090



15



> Set Gem Pearl 9090  
Wall / Metrowood Natural 9090,  
Bianco Lasa 60120 Kry (THEMAR Collection)





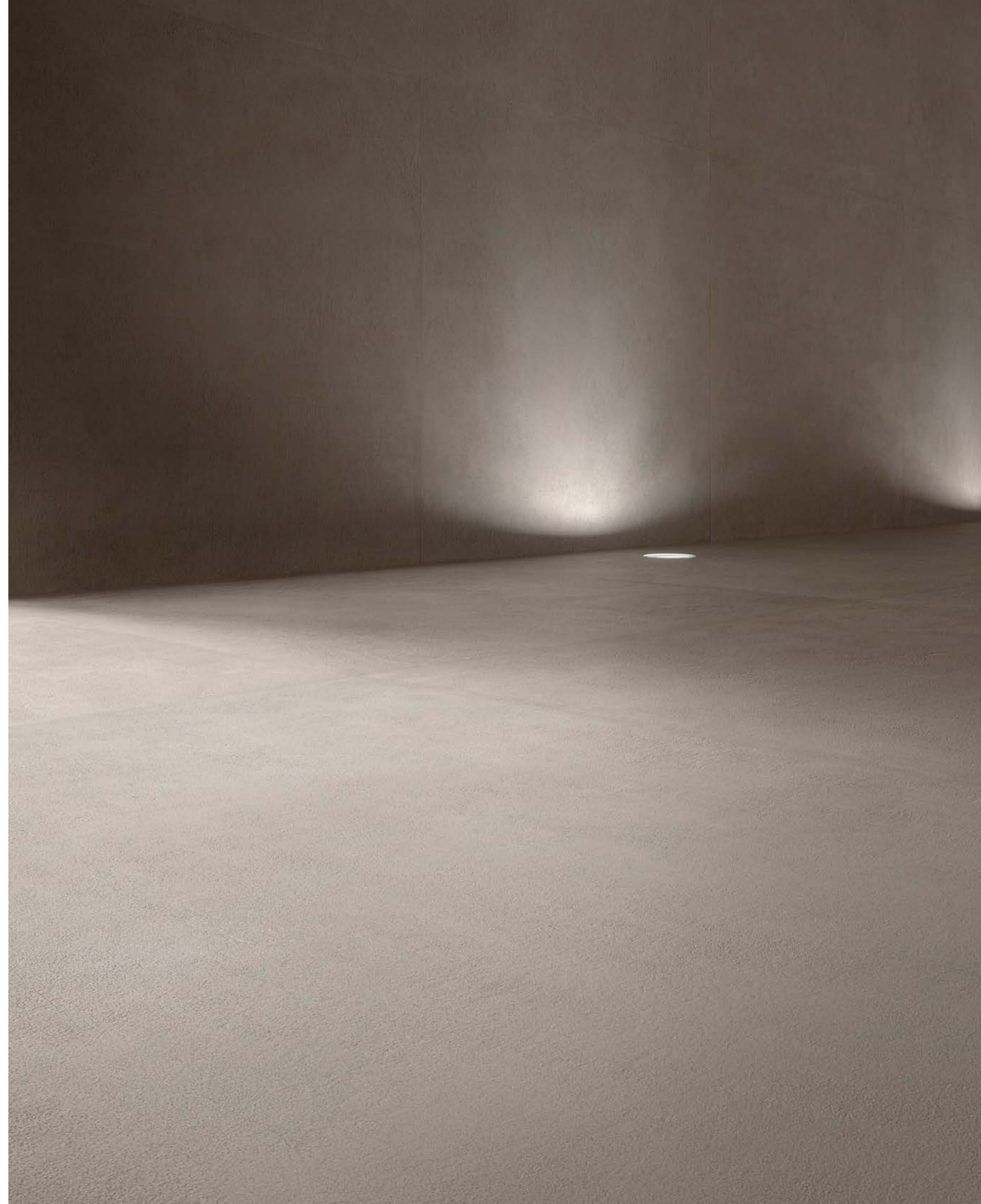
< Set Gem Pearl 9090  
 Wall / Set Concrete Pearl 9090,  
 Bianco Lasa 60120 Kry (THEMAR Collection)



Set Concrete Grey 120120  
Wall / Set Concrete Grey 120120, Metrowood Natural 9090



Metrowood Natural 9090

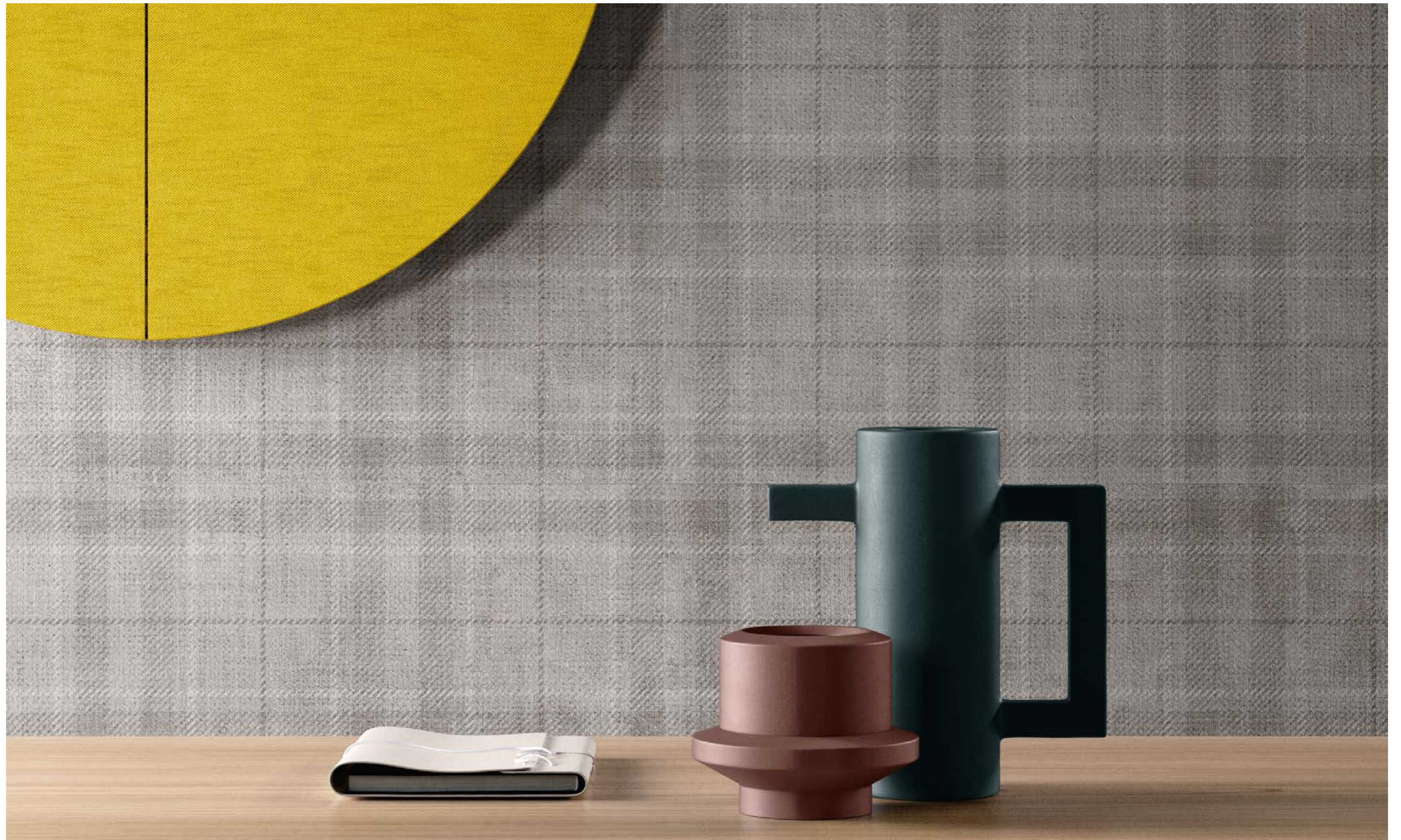


> Set Concrete Grey 120120



Set Tartan Grey 9090

Wall / Set Tartan Grey 9090, Set Concrete Grey 9090



Set Tartan Grey 9090



Set Tartan White 9090



> Set Tartan White 9090





Set Concrete Pearl 9090

> Set Concrete Pearl 9090

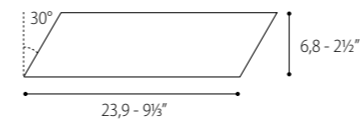




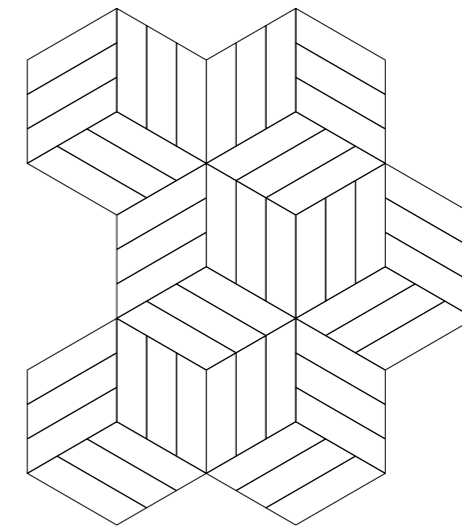
Set Concrete Dark 6060

Wall / Set Dress Pearl Chevron, Set Dress White Chevron

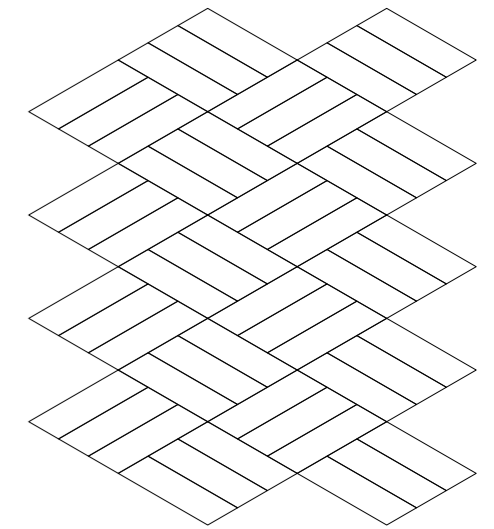
## | Set Dress Chevron



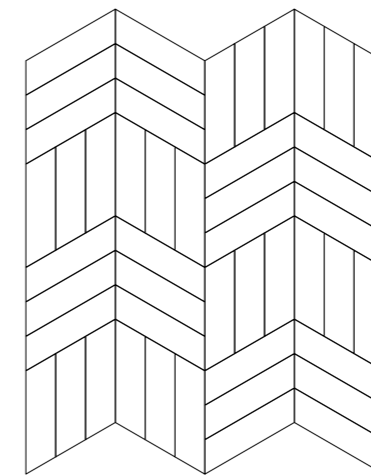
01



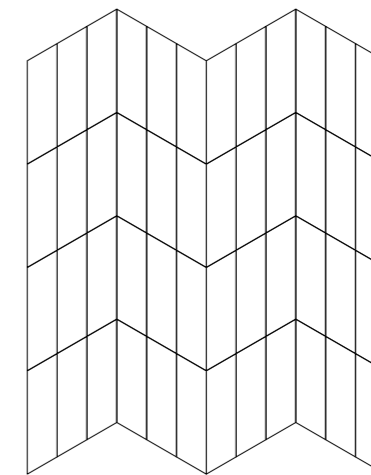
02



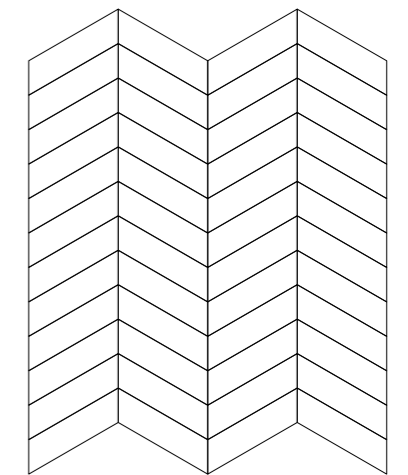
03



04



05



Lo spirito di prodotto ci guida ad esplorare le vie del design d'interni, incrociandole con la ricchezza di forma e sostanza dei volti sempre nuovi e diversi di una materia universale come la ceramica.

The product spirit takes us to explore the paths of interior design, crossing them with the richness in form and substance of the always new and different faces of a universal material like ceramics.

Durch unser Produktbewusstsein ergründen wir die Möglichkeiten des Innen-Designs denen wir mit stets neuartigem Formenreichtum und äußerlicher Substanz eines universellen Stoffes wie Keramik begegnen.

L'esprit du produit nous conduit à la recherche des chemins du design d'intérieur, en le mélangeant avec la richesse des formes et des éléments, toujours nouveaux et différents, d'une matière universelle comme la céramique.

Сама сущность изделия побуждает нас открывать всё новые пути интерьерного дизайна, скрепящая их с богатством форм и содержанием всегда новых и разных лицевых поверхностей такого универсального материала, как керамика.

# PATCHWORK DI CEMENTINE CON 45 DISEGNI DIVERSI PER DECORARE A PAVIMENTO E PARETE OGNI TIPO DI AMBIENTE

34

Mix of cementine with 45 different patterns to decorate floor and wall in any kind of environment

Zement-Patchwork mit 45 verschiedenen Designs zur Dekoration von Boden und Wand jede Art von Umgebung

Combinaison de cementine avec 45 dessins pour décorer le sol et le mur de tout type de pièce

Лоскутная техника пэчворк в глазури с 45 разными рисунками для декорирования пола и стен в любой среде

Metrosigns

Wall / Set Dress Pearl 9090

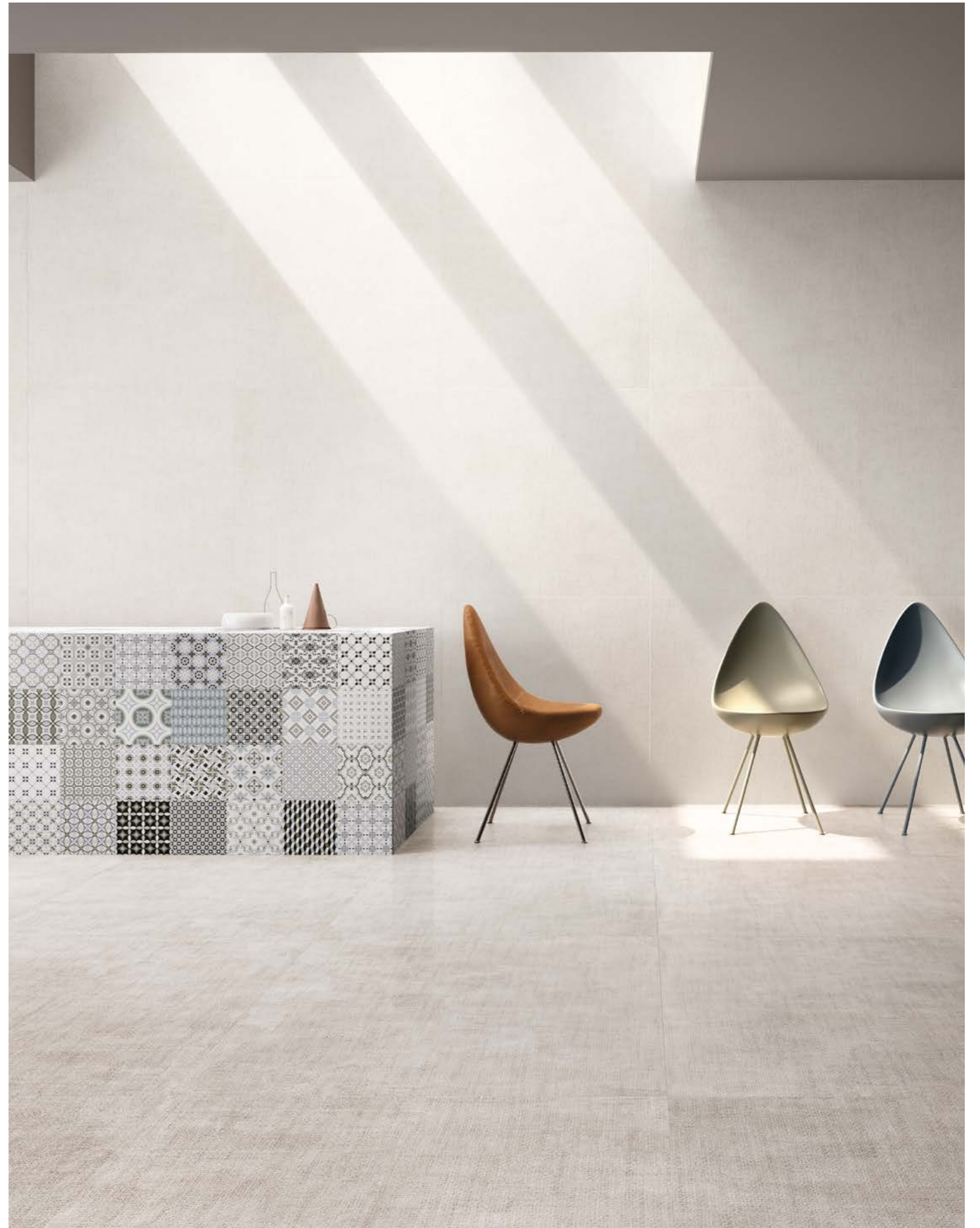


35



Set Dress White 9090

> Set Dress White 9090  
Wall / Set Dress White 9090, Metrosigns





Metrowood Natural 9090, Set Concrete White 3060  
 Floor / Metrosigns



Set Concrete Pearl 3060 , Set  
 Floor / Metrowood Natural 9090

# AS 2.0

40



Set Concrete Dark 6090 As 2.0

41



Set Concrete Pearl 6090 As 2.0

# AS 2.0

Antiscivolo	Antislip	Trittsicher	Antidérapant	Противоскользящий
Spessore 20 mm	Thickness 20 mm	Stärke 20 mm.	Épaisseur 20 mm	Толщина 20 ММ
Resistente agli sbalzi termici	Resistant to thermal shock	Unempfindlich gegen Temperaturschwankungen	Résistant aux chocs thermiques	Устойчивый к перепадам температур
Ingelivo - Ignifugo	Frost resistant - Fire resistant	Frostsicher - Feuerfest	Ingélif - Résistant au feu	Морозостойкий
Inalterabile nel tempo	Time resistant	Zeitbeständig (lange Lebensdauer)	Inaltérable dans le temps	Огнеупорный
Facilissimo da posare	Easy to lay	Leichte Verlegung	Mise en œuvre très simple	Долговечный
Nel caso di posa a secco è semplice da riposizionare o rimuovere, non servono lavori di muratura	In case of dry tiling it's easy to replace or remove, no walling	Bei der trockenen Verlegung einfach zu positionieren oder zu entfernen, es sind keine Maurerarbeiten erforderlich	Dans le cas de pose à sec est facile à replacer ou enlever, ils ne sont pas nécessaires des travaux de maçonnerie	Простой в укладке: при укладке сухим методом его легко установить и снять, без кладочного раствора.
Pavimentazioni sopraelevate *	Raised floors *	Doppelböden *	Pose sur plots *	Мощение на приподнятом основании *



Rettificata  
Rectified  
Kalibriert  
Rectifié  
Ректифицированная

60x90 - 24"x36"



**Posa a secco su erba**  
Dry laying on grass  
Trockene Verlegung auf Grass  
Pose sur pelouse  
Сухая укладка на травяной газон



**Posa a secco su ghiaia**  
Dry laying on gravel  
Trockene Verlegung auf Kies  
Pose sur gravillon  
Сухая укладка на щебень



**Posa a secco su sabbia**  
Dry laying on sand  
Trockene Verlegung auf Sand  
Pose sur sable  
Сухая укладка на песок



Pavimentazioni sopraelevate  
Raised floors  
Doppelböden  
Pose sur plots  
Мощение на приподнятом основании



**\* AVVERTENZE PER LA POSA SOPRAELEVATA**  
Il formato 60x90 in 20 mm di spessore è ritenuto idoneo per la posa su massetto, su ghiaia, su sabbia, su erba, o su supporti ad una altezza massima di 2 cm utilizzando 6 supporti per lastra in modo da distribuire uniformemente i carichi. Per una sopraelevazione compresa tra i 2 ed i 10 cm è necessaria l'applicazione di una rete in fibra di vetro nella parte inferiore della lastra (foglio di acciaio zincato o rete plus per il formato 60x90). Una sopraelevazione superiore ai 10 cm è vincolata alla applicazione alla parte retrostante della lastra di un foglio di lamiera zincata.

**\* WARNINGS FOR RAISED FLOOR LAYING**  
Size 60x90 with 20 mm thickness is considered suitable for laying on screed, gravel, sand, grass or supports at a maximum height of 2 cm, using 6 supports per slab in order to distribute loads uniformly. For raised laying between 2 and 10 cm you must apply a fibre glass mesh to the rear of the slab (galvanised steel sheet or plus mesh for size 60x90). For raised floors of more than 10 cm, galvanised steel sheet must be applied to the rear of the slab.

**\* HINWEISE FÜR DIE INSTALLATION ALS DOPPELBÖDEN**  
Das Format 60x90 in 20 mm Stärke eist sich für die Verlegung auf Estrich, Kies, Sand, Gras oder Trägern mit einer maximalen Höhe von 2 cm, indem man 6 Stützen pro Platte verwendet, um die Lasten gleichmäßig zu verteilen. Für eine Verlegung in einer Höhe zwischen 2 und 10 cm muss ein Glasfasernetz auf der Unterseite der Platte angebracht werden (verzinkte Stahlfolie oder Plus-Netz beim Format 60x90). In einer Höhe über 10 cm darf nur verlegt werden, wenn man eine verzinkte Blechfolie auf der Rückseite der Platte anbringt.

**\* MISES EN GARDE POUR LA POSE SURÉLEVÉE**  
Le format 60x90 en 20 mm d'épaisseur est appropriés à la pose sur chape, gravier, sable, pelouse ou sur vérins à une hauteur maximum de 2 cm, en utilisant 6 vérins par plaque, de manière à répartir équitablement les charges. Pour une surélévation comprise entre 2 et 10 cm, il est nécessaire d'appliquer un filet en fibre de verre au dos de la plaque (feuille d'acier galvanisé ou filet « plus » pour le format de 60x90). Une surélévation de plus de 10 cm exige l'application d'une feuille de tôle galvanisée au dos de la plaque.

**\* РЕКОМЕНДАЦИИ ПО УКЛАДКЕ ПЛИТ НА ФАЛЬШПОЛ**  
Форматы плит 60x90 толщиной 20 мм считаются пригодными для укладки на стяжку, гравий, песок, траву или на основания высотой не более 2 см при использовании 6 стоек для каждой плиты для равномерного распределения нагрузок. Для поднятия уровня пола на высоту от 2 до 10 см необходимо приклеивать к нижней стороне плит сетку из стекловолокна (лист оцинкованной стали или сетку plus для формата 60x90). При поднятии уровня пола на высоту более 10 см обязательно следует крепить к нижней стороне плит лист из оцинкованной стали.



THE ART OF CREATING  
A SOPHISTICATED BALANCE OF MATERIALS  
IN CONTEMPORARY SPACE

L'arte di comporre il sofisticato equilibrio delle materie nello spazio contemporaneo  
Die Kunst, ein ausgeklügeltes Gleichgewicht zwischen den Rohstoffen herzustellen in zeitgenössischer Umgebung  
L'art de composer un sophistiqué équilibre des matières dans l'espace contemporain  
Искусство создавать изысканную гармонию материалов в современном пространстве

Set Concrete Dark 120120

# SET

Porcelain  
Rectified

Gres porcellanato  
Rettificato  
Feinsteinzeug  
Kalibriert

Grès cérame  
Rectifié  
Керамогранит  
Ректифицированная

digital technology  
10mm 20mm

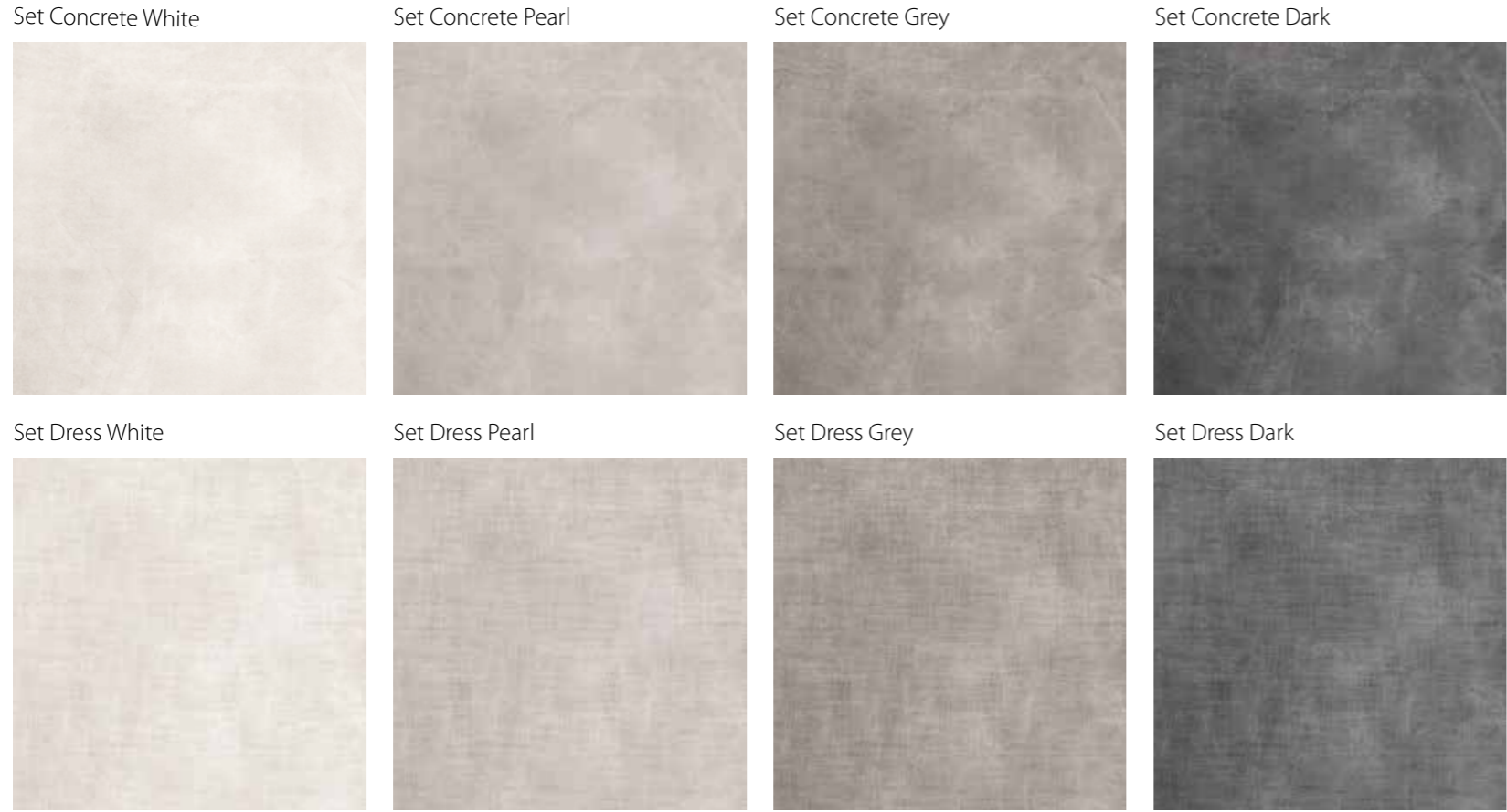
Surfaces	Colours	Decors	Number of patterns	Sizes	Number of patterns	Decors&Accessories
<p><b>Nat</b> Natural</p>	<p>Set Concrete White</p>	<p>Set Dress White</p>	<p>Set Gem White</p>	<p>30 <b>120x120</b> 48"x48"</p>	<p>90x90 36"x36" Set Gem</p>	
<p><b>As 2.0</b> Antislip 20mm</p>	<p>Set Concrete Pearl</p>	<p>Set Dress Pearl</p>	<p>Set Gem Pearl</p>	<p>40 <b>90x90</b> 36"x36"</p>	<p>60x60 24"x24" Set Gem</p>	
	<p>Set Concrete Grey</p>	<p>Set Dress Grey</p>	<p>Set Tartan Grey</p>	<p>55 <b>60x60</b> 24"x24"</p>	<p>90x90 36"x36" Set Tartan</p>	
	<p>Set Concrete Dark</p>	<p>Set Dress Dark</p>	<p>Set Tartan White</p>	<p>110 <b>30x60</b> 12"x24"</p>	<p>60x60 24"x24" Set Tartan</p>	
		<p>Metrowood Set Tartan White</p>		<p>45 <b>60,4x90,6</b> 24"x36" As 2.0</p>	<p>90x90 36"x36" Metrowood</p>	
		<p>Metrosigns</p>			<p>30x30 12"x12" Mosaico</p>	
					<p>20x20 8"x8" Metrosigns</p>	
					<p>6,8x23,9 2 1/2"x9 1/3" Chevron</p>	



RET 4 R10 A DCOF



**Colours** Colori • Farben • Couleurs • Цветов

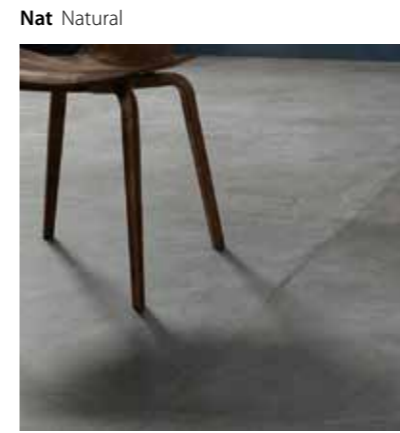


**Sizes** Formati • Formate • Format • Форматы

Surface	NAT				AS 2.0		NAT	
	Set Concrete White	Set Concrete Pearl	Set Concrete Grey	Set Concrete Dark	Mosaico	Chevron	Mosaico	Chevron
Set Concrete White	Set Concrete White 120120 CSASCWHI12	Set Concrete White 9090 CSASCWHI90	Set Concrete White 6060 CSASCWHI60	Set Concrete White 3060 CSASCWHI30	Set Concrete White 6090 As 2.0 CSASCWH260	Mosaico Set Concrete White CSAMSCWH30	-	-
Set Concrete Pearl	Set Concrete Pearl 120120 CSASCPEA12	Set Concrete Pearl 9090 CSASCPEA90	Set Concrete Pearl 6060 CSASCPEA60	Set Concrete Pearl 3060 CSASCPEA30	Set Concrete Pearl 6090 As 2.0 CSASCPE260	Mosaico Set Concrete Pearl CSAMSCPE30	-	-
Set Concrete Grey	Set Concrete Grey 120120 CSASCGRE12	Set Concrete Grey 9090 CSASCGRE90	Set Concrete Grey 6060 CSASCGRE60	Set Concrete Grey 3060 CSASCGRE30	Set Concrete Grey 6090 As 2.0 CSASCGR260	Mosaico Set Concrete Grey CSAMSCGR30	-	-
Set Concrete Dark	Set Concrete Dark 120120 CSASCDAR12	Set Concrete Dark 9090 CSASCDAR90	Set Concrete Dark 6060 CSASCDAR60	Set Concrete Dark 3060 CSASCDAR30	Set Concrete Dark 6090 As 2.0 CSASCDAR260	Mosaico Set Concrete Dark CSAMSCDA30	-	-
Set Dress White	-	Set Dress White 9090 CSASDWHI90	Set Dress White 6060 CSASDWHI60	Set Dress White 3060 CSASDWHI30	-	Mosaico Set Dress White CSAMSDWH30	Set Dress White Chevron CSASDCHW07	-
Set Dress Pearl	-	Set Dress Pearl 9090 CSASDPEA90	Set Dress Pearl 6060 CSASDPEA60	Set Dress Pearl 3060 CSASDPEA30	-	Mosaico Set Dress Pearl CSAMSDPE30	Set Dress Pearl Chevron CSASDCHP07	-
Set Dress Grey	-	Set Dress Grey 9090 CSASDGRE90	Set Dress Grey 6060 CSASDGRE60	Set Dress Grey 3060 CSASDGRE30	-	Mosaico Set Dress Grey CSAMSDGR30	Set Dress Grey Chevron CSASDCHG07	-
Set Dress Dark	-	Set Dress Dark 9090 CSASDDAR90	Set Dress Dark 6060 CSASDDAR60	Set Dress Dark 3060 CSASDDAR30	-	Mosaico Set Dress Dark CSAMSDDA30	Set Dress Dark Chevron CSASDCHD07	-
Pz / Box	2	2	4	7	1	6	24	-
Mq / Box	2,88	1,62	1,44	1,26	0,55	0,54	0,39	-
Kg / Box	63,4	35,6	31,7	27,7	23,8	11,3	8,6	-
Kg / Mq	22	22	22	22	43,3	20,9	22,1	-
Boxes / Pallet	16	20	30	32	32	60	54	-
Mq / Pallet	46,08	32,4	43,2	40,32	17,6	32,4	21,06	-
Kg / Pallet	1.014	712	951	886	762	678	464	-

Decors&Accessories

**Surfaces** Superfici  
Oberflächen • Surfaces • Поверхности



As 2.0 Antislip 20mm



Decors&Accessories



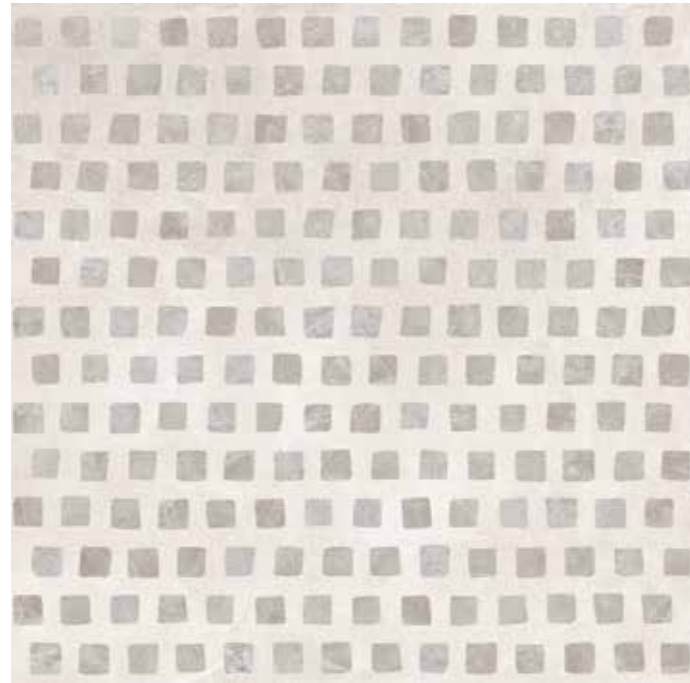
90x90 36"x36"  
Metrowood Natural 9090  
CSAMWONA90

**Number of patterns** Numero di grafiche • Grafische Nummer • Nombre d'images • Количество графических оформлений

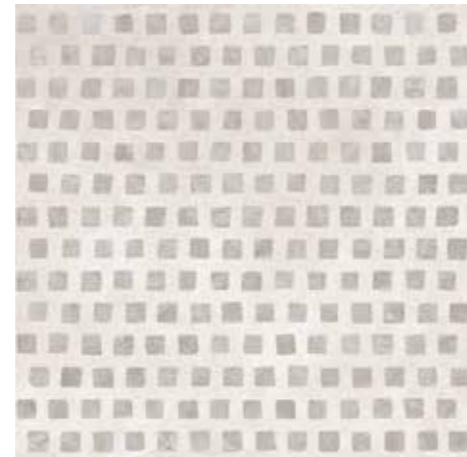
Set Concrete	Set Dress	120x120 48"x48"	90x90 36"x36"	60x60 24"x24"	30x60 12"x24"	As 2.0 60,4x90,6 24"x36"	Metrowood 90x90 36"x36"
30	40	55	110	45	9		

Decors&Accessories

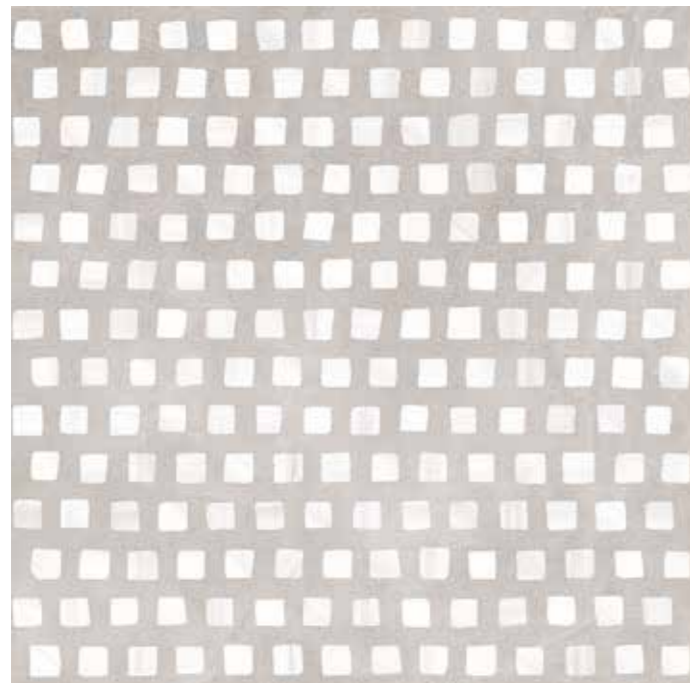
Metrowood	Set Gem	Set Tartan	Set Gem	Set Tartan	Metrosigns
90x90 36"x36"	90x90 36"x36"	90x90 36"x36"	60x60 24"x24"	60x60 24"x24"	20x20 8"x8"
NAT	NAT	NAT	NAT	NAT	NAT
Metrowood Natural 9090 CSAMWONA90	Set Gem White 9090 CSASGWHI90 Set Gem Pearl 9090 CSASGGRE90	Set Tartan White 9090 CSASTAWH90 Set Tartan Grey 9090 CSASTAGR90	Set Gem White 6060 CSASGWHI60 Set Gem Pearl 6060 CSASGGRE60	Set Tartan White 6060 CSASTAWA60 Set Tartan Grey 6060 CSASTAGR60	Metrosigns CSAMETS120
2	2	2	4	4	17
1,62	1,62	1,62	1,44	1,44	0,68
35,6	35,6	35,6	31,7	31,7	15
22	22	22	22	22	22,1
20	20	20	30	30	96
32,4	32,4	32,4	43,2	43,2	65,28
712	712	712	951	951	1.440



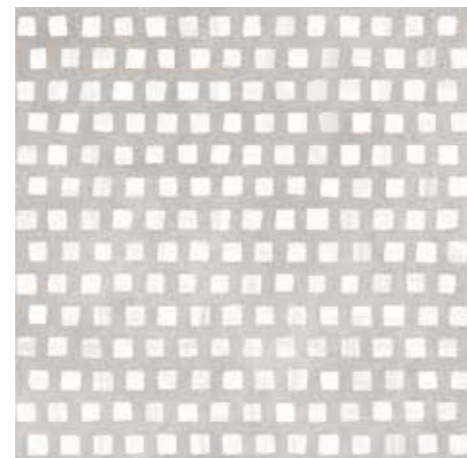
90x90 36"x36"  
Set Gem White 9090  
CSASGWHI90



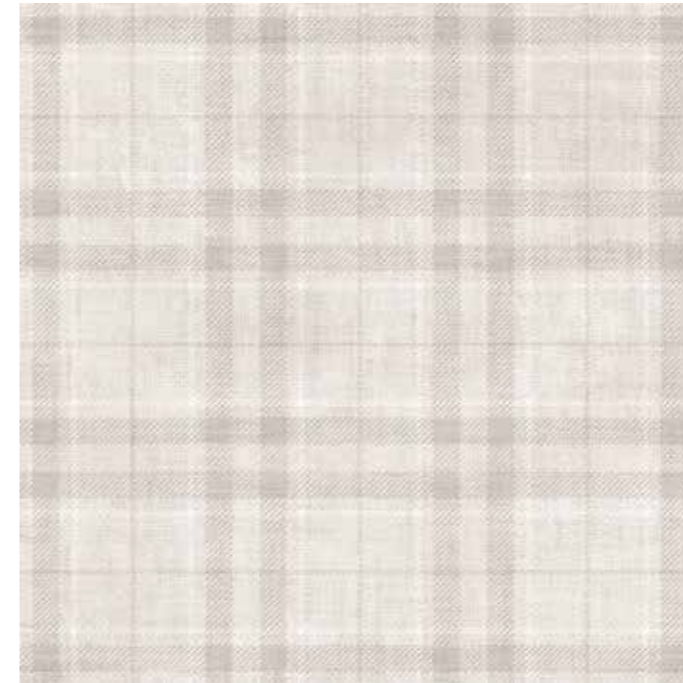
60x60 24"x24"  
Set Gem White 6060  
CSASGWHI60



90x90 36"x36"  
Set Gem Pearl 9090  
CSASGGRE90



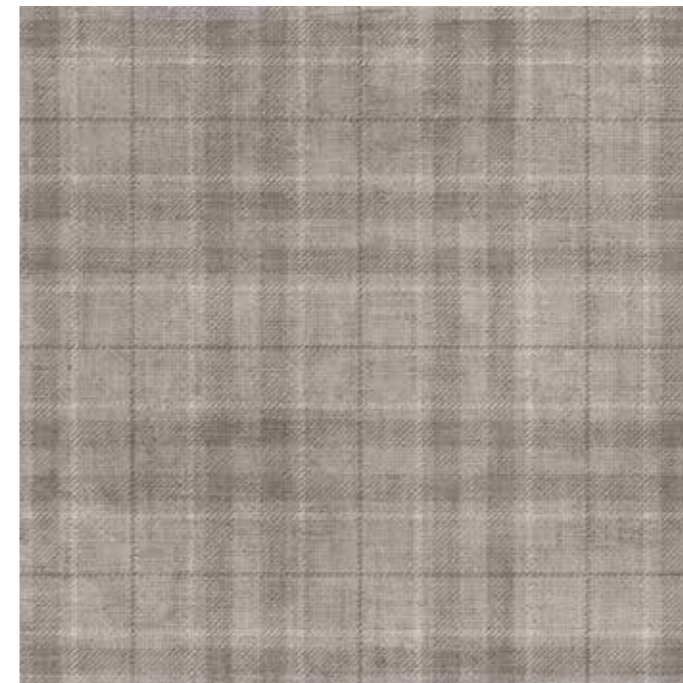
60x60 24"x24"  
Set Gem Pearl 6060  
CSASGGRE60



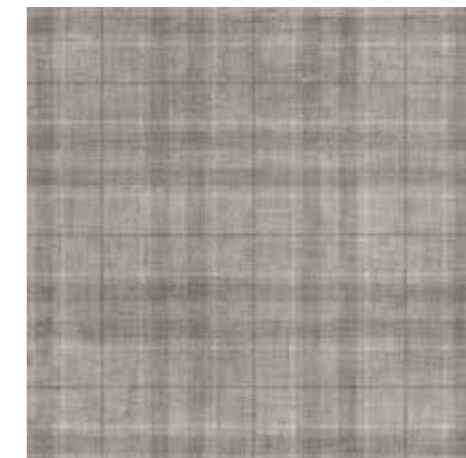
90x90 36"x36"  
Set Tartan White 9090  
CSASTAWH90



60x60 24"x24"  
Set Tartan White 6060  
CSASTAWA60



90x90 36"x36"  
Set Tartan Grey 9090  
CSASTAGR90



60x60 24"x24"  
Set Tartan Grey 6060  
CSASTAGR60

**Tiles with graphic directional lines**

Characterized by the typical design that incorporates the armature of a entwined cotton lines and squares carpet, any single SET tile presents a direction, which must be respected and followed during the tiling, both on the floor wall, to get the best possible aesthetic result.

**Piastrelle con grafica a linee direzionate**

Caratterizzata dal tipico design che richiama l'armatura di un tappeto intrecciato a righe e a quadri in cotone, ogni singola piastrella di SET presenta un verso, che va rispettato e seguito nelle operazioni di posa di una serie di piastrelle, sia a pavimento sia a parete, per ottenere la corretta resa estetica ed il miglior effetto possibile d'insieme.

**Fliesen mit grafischen Richtungslinien**

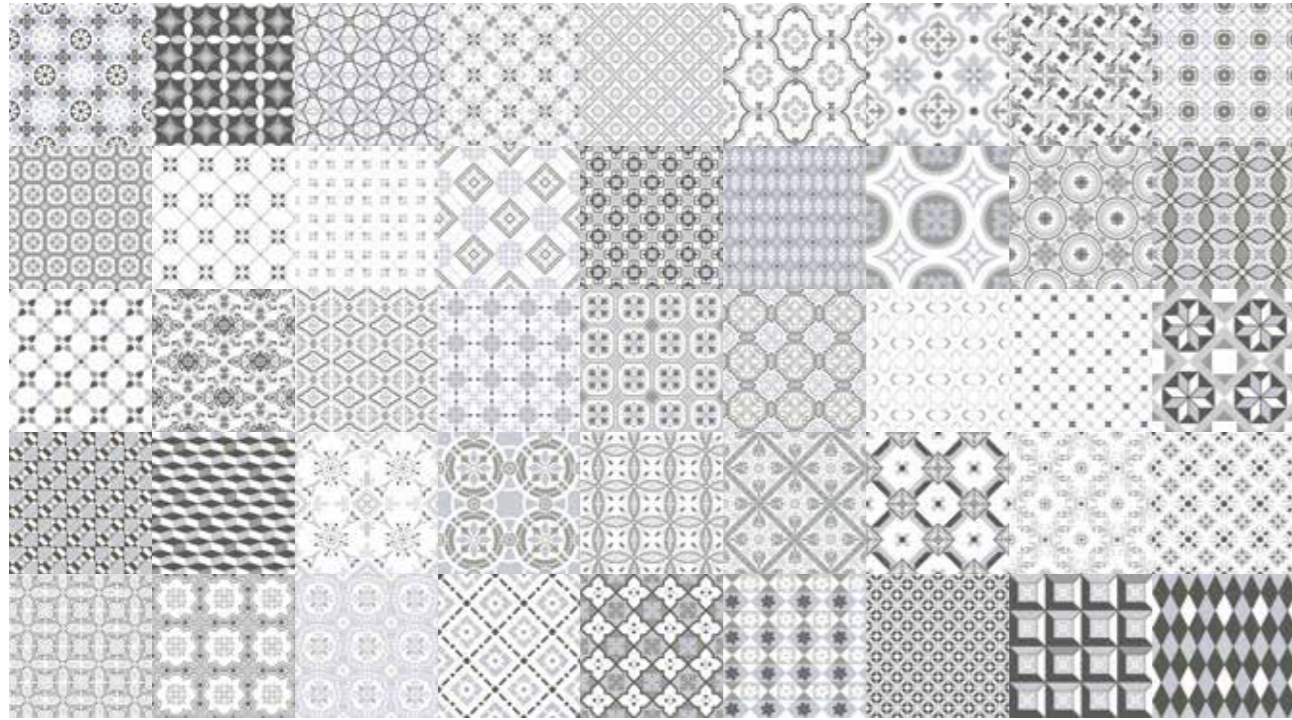
Durch das typische Design gekennzeichnet, das an die Bindung eines Teppichs mit eingeflochtenen Baumwollstreifen erinnert, gibt jede einzelne SET Fliese eine bestimmte Richtung vor, die bei der Verlegung einer Fliesenreihe am Boden oder an der Wand beachtet und befolgt werden muss, um die korrekte ästhetische Wirkung und den bestmöglichen Gesamteffekt zu erzielen.

**Carreaux décorés avec lignes directionnelles**

Il se caractérise par la conception typique qui rappelle l'armure d'un tapis tissé avec lignes et toiles de coton. Chaque carreau de SET présente un sens de pose, qui doit être respecté et suivi dans les opérations de pose des carreaux, tant au sol ainsi qu'au mur, afin d'obtenir l'esthétique optimale et le meilleur effet de l'ensemble.

**Плитка с рисунком в виде линий определенного направления**

Durch das typische Design gekennzeichnet, das an die Bindung eines Teppichs mit eingeflochtenen Baumwollstreifen erinnert, gibt jede einzelne SET Fliese eine bestimmte Richtung vor, die bei der Verlegung einer Fliesenreihe am Boden oder an der Wand beachtet und befolgt werden muss, um die korrekte ästhetische Wirkung und den bestmöglichen Gesamteffekt zu erzielen.



20x20 8"x8"  
Metrosigns  
CSAMETS120

RET 4 R10 A B.C.R. DCOF

**Metrosigns** consists of **45 graphic variations**. It is supplied in boxes of **27 pieces**, with randomly-mixed graphics inside each box.

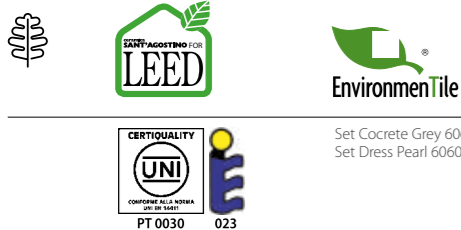
**Metrosigns** si compone di **45 varianti grafiche**. Viene fornita in scatole da **27 pezzi**, all'interno delle quali le grafiche sono miscelate in modo casuale.

**Metrosigns** umfasst **45 grafische Varianten**. Sie wird in **27-Stück**-Schachteln geliefert, in denen die Grafiken jeweils nach dem Zufallsprinzip vermischt werden.

**Metrosigns** est composé par **45 décors différent**. Il est livré dans des boîtes de **27 pièces**, dans les quelles, les décors sont mélangés d'une façon aléatoire.

**Metrosigns** включает в себя **45 графических вариантов**. Поставляется в коробках, по **27 штук** в каждой коробке, где варианты графического оформления подобраны случайным образом.

**Certifications**  
Certificazioni • Zertifizierungen • Certifications • Сертификаты



Static coefficient of friction **ASTM** test ASTM C1028 - 06  
Dynamic coefficient of friction **DCOF** AcuTest\* ANSI A137.1 - 2012  
Dry  $\mu > 0,6$  Wet  $\mu > 0,6$  Natural Surface - Antislip  
WET  $\geq 0,42$  Natural Surface - Antislip

**Suggestion for laying**

Consigli per la posa • Ratschläge für die Verlegung • Conseil pour la pose • Советы по укладке

Considering the characteristics of this series we suggest:  
• 2 mm joint  
• For the sizes 30x60 lined up laying or 3/4 staggered laying is suggested

Viste le caratteristiche della serie si consiglia:  
• Fuga 2 mm  
• Per i formati 30x60 si consigliano pose affiancate o a correre sfalsate di 3/4

Im Hinblick auf die Eigenschaften der Serie es empfiehlt sich:  
• 2 mm Fuge  
• Für Formate 30x60 neben verlegt oder 3/4 versetzt

Vu les caractéristiques de la série, nous conseillons:  
• Joint 2 mm  
• Pour les formats 30x60, il est conseillé une pose alignée ou une pose décalée au 3/4

В силу характеристик данной серии рекомендуется:  
• Шов 2 мм  
• Для форматов 30x60 рекомендуется укладка рядами или со смещением на 3/4

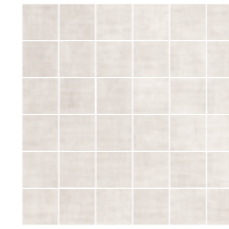


**Set Concrete Mosaico\* 30x30 12"x12"**

Available in all Set Concrete colours



\* On net  
Montato su rete  
Auf Netz  
Sur trame  
Собрана на сетке

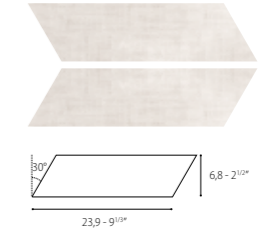


**Set Dress Mosaico\* 30x30 12"x12"**

Available in all Set Dress colours



\* On net  
Montato su rete  
Auf Netz  
Sur trame  
Собрана на сетке



**Set Dress Chevron 6,8x23,9 2 1/2"x9 1/3"**

Special Trims • Pezzi Speciali • Formteile • Pièces Spéciales • Специальные Изделия

	Battiscopa 90 7,3x90 3"x36"		Battiscopa 60 7,3x60 3"x24"		Gradone 120** 33x120 13"x48"		Ang. Gradone 120 Sx** 33x120 13"x48"		Ang. Gradone 120 Dx** 33x120 13"x48"		Gradone 90** 33x90 13"x36"		Ang. Gradone 90 Sx** 33x90 13"x36"		Ang. Gradone 90 Dx** 33x90 13"x36"		Quarter Round 30 1,5x30 1/4"x12"		
Surface	NAT	NAT	NAT	NAT	NAT	NAT	NAT	NAT	NAT	NAT	NAT	NAT	NAT	NAT	NAT	NAT	NAT	NAT	
Set Concrete White	Battiscopa 90 Set Concrete White CSABSCWH90	Battiscopa 60 Set Concrete White CSABSCWH60	Gradone 120 Set Concrete White CSAGRSCW12	Ang. Gradone 120 Sx Set Concrete White CSAGASCW12	Ang. Gradone 120 Dx Set Concrete White CSAGADCW12	Gradone 90 Set Concrete White CSAGSCWH90	Ang. Gradone 90 Sx Set Concrete White CSAGSSCW90	Ang. Gradone 90 Dx Set Concrete White CSAGDSCW90	Quarter Round 30 Set Concrete White CSAQRSCW30										
Set Concrete Pearl	Battiscopa 90 Set Concrete Pearl CSABSCPE90	Battiscopa 60 Set Concrete Pearl CSABSCPE60	Gradone 120 Set Concrete Pearl CSAGRSCP12	Ang. Gradone 120 Sx Set Concrete Pearl CSAGASCP12	Ang. Gradone 120 Dx Set Concrete Pearl CSAGADCP12	Gradone 90 Set Concrete Pearl CSAGSCPE90	Ang. Gradone 90 Sx Set Concrete Pearl CSAGSSCP90	Ang. Gradone 90 Dx Set Concrete Pearl CSAGDSCP90	Quarter Round 30 Set Concrete Pearl CSAQRSCP30										
Set Concrete Grey	Battiscopa 90 Set Concrete Grey CSABSCGR90	Battiscopa 60 Set Concrete Grey CSABSCGR60	Gradone 120 Set Concrete Grey CSAGRSCG12	Ang. Gradone 120 Sx Set Concrete Grey CSAGASCG12	Ang. Gradone 120 Dx Set Concrete Grey CSAGADCG12	Gradone 90 Set Concrete Grey CSAGSCGR90	Ang. Gradone 90 Sx Set Concrete Grey CSAGSSCG90	Ang. Gradone 90 Dx Set Concrete Grey CSAGDSCG90	Quarter Round 30 Set Concrete Grey CSAQRSCG30										
Set Concrete Dark	Battiscopa 90 Set Concrete Dark CSABSCDA90	Battiscopa 60 Set Concrete Dark CSABSCDA60	Gradone 120 Set Concrete Dark CSAGRSCD12	Ang. Gradone 120 Sx Set Concrete Dark CSAGASCD12	Ang. Gradone 120 Dx Set Concrete Dark CSAGADCD12	Gradone 90 Set Concrete Dark CSAGSCDA90	Ang. Gradone 90 Sx Set Concrete Dark CSAGSSCD90	Ang. Gradone 90 Dx Set Concrete Dark CSAGDSCD90	Quarter Round 30 Set Concrete Dark CSAQRSCD30										
Set Dress White	Battiscopa 90 Set Dress White CSABSDWH90	Battiscopa 60 Set Dress White CSABSDWH60	-	-	-	-	-	-	Quarter Round 30 Set Dress White CSAQRSDW30										
Set Dress Pearl	Battiscopa 90 Set Dress Pearl CSABSDPE90	Battiscopa 60 Set Dress Pearl CSABSDPE60	-	-	-	-	-	-	Quarter Round 30 Set Dress Pearl CSAQRSDP30										
Set Dress Grey	Battiscopa 90 Set Dress Grey CSABSDGR90	Battiscopa 60 Set Dress Grey CSABSDGY60	-	-	-	-	-	-	Quarter Round 30 Set Dress Grey CSAQRSDG30										
Set Dress Dark	Battiscopa 90 Set Dress Dark CSABSDDA90	Battiscopa 60 Set Dress Dark CSABSDDA60	-	-	-	-	-	-	Quarter Round 30 Set Dress Dark CSAQRSDD30										
Pz / Box	8	14	2	1	1	2	1	1	42										
Mq / Box																			
Kg / Box																			
Kg / Mq																			
Boxes / Pallet																			
Mq / Pallet																			
Kg / Pallet																			

\*\* GRADONE See page 611 Vedi pagina 611 • Siehe Seite 611 • Voir la page 611 • См. страницу 611

ceramica  
**SANT'AGOSTINO**

Via Statale, 247 - 44047 S. Agostino (FE) ITALY

T. +39 0532 844111

F. Italia + 39 0532 846113

F. Export + 39 0532 844209

info@ceramicasantagostino.it

[www.ceramicasantagostino.it](http://www.ceramicasantagostino.it)



#AgostinoLover